



## Easter island moai tissue box

F **Florian**

[VIEW IN BROWSER](#)

updated 9. 2. 2022 | published 9. 2. 2022

### Summary

This is a tissue box cover with a friendly face.



18.20 hrs



2 pcs



0.30 mm



0.60 mm



PLA



507 g



Prusa  
MK3S/S+ &  
MMU2S

[Household](#) > [Home Decor](#)

Tags: [moai](#) [easterislandhead](#) [easterisland](#) [tissuedispenser](#)  
[tissuebox](#) [tissueboxholder](#) [tissueholder](#)

Bored of picking your own nose. How about picking someone else's? This is your chance!

This stylish tissue box cover is not only convenient, but also very satisfying to use. It fits an 11.5cm x 23cm x 7cm big tissue box and is usable in both a standing and lying positions.

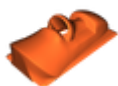
I printed this out of marble PLA with a 0.6 mm nozzle at a 0.3 mm layer height. The bottom part does not require any supports, but the head does.

I got this idea from here: <https://www.thingiverse.com/thing:3552996>  
But I wanted to print this with fewer supports, so I took the original head model from here: <https://www.thingiverse.com/thing:144668> and modeled my own box.

## Model files



**box\_bottom.3mf**



**head\_top.3mf**

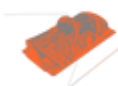
## Print files



**box\_bottom\_06n\_03mm\_pla\_mk3smmu2s\_7h20m.gcode**

⚙️ PLA ⚙️ 0.60 mm ⚙️ 0.30 mm ⌚ 7.34 hrs ⚖️ 220 g

🖨️ Prusa MK3S/S+ & MMU2S



**head\_top\_06n\_03mm\_pla\_mk3smmu2s\_10h52m.gcode**

⚙️ PLA ⚙️ 0.60 mm ⚙️ 0.30 mm ⌚ 10.86 hrs ⚖️ 287 g

🖨️ Prusa MK3S/S+ & MMU2S

## License ©

This work is licensed under a  
[Creative Commons \(4.0 International License\)](https://creativecommons.org/licenses/by-nc-sa/4.0/)



**Attribution—Noncommercial—Share Alike**

- ✘ | Sharing without ATTRIBUTION
- ✓ | Remix Culture allowed
- ✘ | Commercial Use
- ✘ | Free Cultural Works
- ✘ | Meets Open Definition